

CERTIFICATE OF LOCATION OF GOVERNMENT CORNER

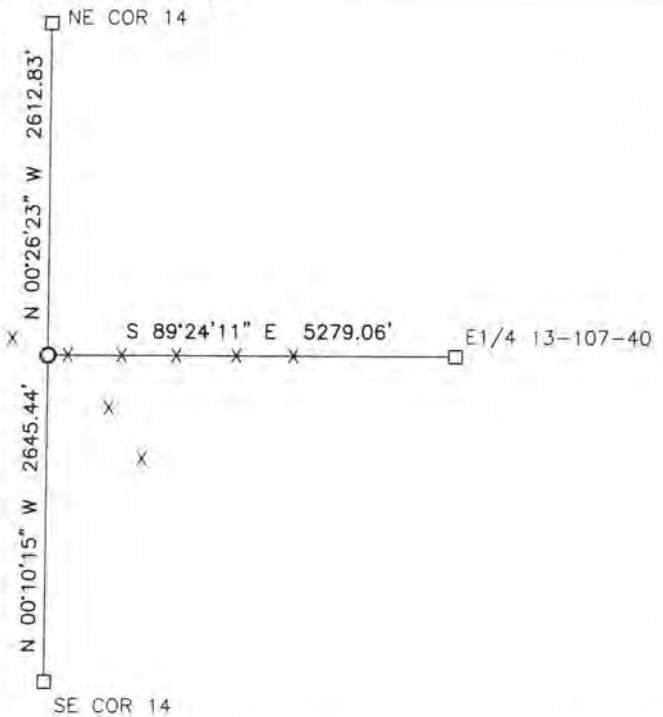
EAST QUARTER Corner of Section 14, Township 107, Range 40, 5TH P.M.

STATE OF MINNESOTA, County of MURRAY

At the corner location shown on the sketch:

- On 7/18/17 found a 2" Pipe with seal "Minnesota Property Post"
DATE
- left monument as found, lowered monument, removed monument (explain)
- On _____ placed a _____
DATE

SKETCH OF REFERENCE TIES



Minnesota State Plane Coordinate
System Murray County Datum
NAD83 (1996)

N: 181985.302
E: 543078.750

Statement of evidence relative to this corner location is on back of page.

I hereby certify that this document and the data contained herein was prepared by me or under my direct supervision.

[Signature] 9/18/17
SIGNATURE DATE

Registration No. 43844

- Land Surveyor, Professional Engineer
- County Surveyor, County Engineer

STATE OF MINNESOTA, } ss.
COUNTY OF MURRAY, }

I hereby certify that the within Instrument was filed in this office for record on the 12TH day of OCTOBER A.D. 20 17 at 11:00 o'clock A. M. and was duly recorded as Document No. _____

[Signature]
County Recorder

Statement of Evidence

In 1861, L Brockmann did the original subdivision of the township.

In 1964, the D.N.R. Bureau of Engineering set a department monument at the fence intersection.

On July 10, 1985, the D.N.R. Bureau of Engineering found an iron pipe with a 2" diameter cap next to a corner fence post.

On July 18, 2017, Bueltel-Moseng Land Surveying found a 2" pipe with seal "Minnesota Property Post" next to a corner fence post.